

# Vane-cell pumps

- Fixed displacement pumps with 12 vanes in the rotor insert
- Hydraulic axial backlash compensation for high pressure operation
- Low noise level
- $p_{max}$  210 bar

Code clockwise	Pumping volume cm <sup>3</sup> /rev	Speed min./max	Max. pressure bar	Q <sub>max</sub> at 7 bar l/min.	Q <sub>max</sub> at 210 bar l/min.	Shaft diameter mm	Suction connector SAE	Pressure connector SAE	A mm	D mm	L mm	M mm	Q mm	Weight kg
HK PFE 41 045 1 DT	45.0	800/2500	210	64	57	22.22	1 1/2"	1"	160.0	101.6	146.0	107.0	14.3	14.0
HK PFE 41 056 1 DT	55.8	800/2500	210	80	72									
HK PFE 41 070 1 DT	69.9	800/2500	210	101	91									
HK PFE 41 085 1 DT	85.3	800/2000	210	124	114									
HK PFE 52 090 3 DT	90.0	1000/2000	250	128	111	25.38	2"	1 1/4"	189.0	127.0	181.0	143.5	17.5	32.1
HK PFE 52 110 3 DT	109.6	1000/2200	250	157	138									
HK PFE 52 129 3 DT	129.2	1000/2200	250	186	163									

Performance data at 1500 rpm with hydraulic oil with a viscosity of 24 mm<sup>2</sup>/s at 40°C

# Axial piston pumps

- Pumps with an adjustable pumping volume
- Low noise level
- Manually settable pressure regulator
- Shaft with feather key (7/8" for 29 cm<sup>3</sup>; 1" for 45 cm<sup>3</sup>; 1 1/4" for 73 cm<sup>3</sup> and 90 cm<sup>3</sup>)
- Also available with control pressure relief (venting)

Code clockwise	Pumping volume cm <sup>3</sup> /rev	Max. pressure bar		Speed max./min.	Suction connector SAE 3000	Suction connector SAE 6000	Dimension A mm	Dimension B mm	Weight kg
		P <sub>2</sub>	P <sub>3</sub>						
HK PVPC C 3029 1D	29	280	350	3000 / 600	1 1/4"	3/4"	216	101.6	18.0
HK PVPC C 4046 1D	46	280	350	2600 / 600	1 1/2"	1"	248	101.6	24.0
HK PVPC C 5073 1D	73	280	350	2200 / 600	2"	1 1/4"	276	127.0	33.0
HK PVPC C 5090 1D	90	250	315	2200 / 600	2"	1 1/4"	276	127.0	35.0

p<sub>2</sub> - max. operating pressure; p<sub>3</sub> - highest max. pressure

# Damping rings

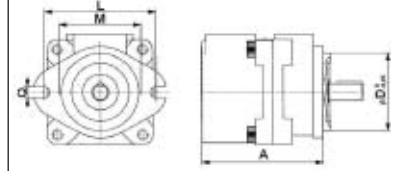
Code	IEC motor size	D mm	D1 mm	D2 mm	G	I mm	L mm	Weight kg
HK DRV1 250	100L / 112M	250	215	191	4 x M12	22	45	1.7
HK DRV1 300	132S / 132M	300	265	235	4 x M12	22	50	2.5
HK DRV1 350	160M / 160L 180M / 180L	350	300	261	4 x M12	22	60	5.0
HK DRV1 400	200L	400	350	301	4 x M12	29	50	7.2

# Damping bars

Code	IEC motor size	L mm	L1 mm	L2 mm	H mm	H1 mm	H2 mm	B mm	B1 mm	B2 mm	d mm	D mm	M	Weight kg
HK DL MDL 100L	100L	240	140	205	40	8	12	50	24	25	14	20	M10	2.3
HK DL MDL 112M	112M	240	140	205	40	8	12	50	20	25	14	20	M10	2.3
HK DL MDL 132S	132S	285	140	245	45	8	12	50	20	25	14	20	M10	2.4
HK DL MDL 132M	132M	285	178	245	45	8	12	50	20	25	14	20	M10	2.4
HK DL MDL 160M	160M	340	210	300	60	15	15	70	28	35	18	26	M12	7.5
HK DL MDL 160L	160L	416	254	370	60	15	15	70	28	35	18	26	M12	7.5
HK DL MDL 180M	180M	416	241	370	60	15	15	70	35	35	18	26	M12	8.0
HK DL MDL 180L	180L	446	279	400	60	15	15	70	35	35	18	26	M12	8.0
HK DL MDL 200L	200L	496	305	430	60	15	15	70	35	35	22	32	M16	8.6



HK PFE 41 045 1 DT



HK PVPC C 3029 1D

