

## Hydraulic flow divider size 2

- These flow dividers are used to feed two or more independent hydraulic circuits from a single pump.
- They divide the oil flow to the consumers and collect it back into the tank.
- Under compliance with the technical parameters, the dividing error is significantly less than with piston flow dividers.
- In order to avoid a summation of dividing errors, there are flow dividers with phase correction valves for a dead-center position correction.
- These flow dividers can be combined with a motor section for use in conjunction with plunger cylinders.
- Dividing error approx 3 %

### Double flow dividers with and without phase correction valves

Code without correction	Code with correction	cm <sup>3</sup> /rev per section	Flow rate per element l/min			Pressure bar			E/A thread	Weight kg without A	Weight kg with A
			At least	Recomm.	maximum	p1	p2	Δp			
HK 9D 02 41	HK 9V 02 41 02	4.20	4.80	7.60	10.00	210	260	50	1/2" - 1/2"	4.50	4.80
HK 9D 02 43	HK 9V 02 43 02	6.00	7.20	10.80	15.00	210	260	50	1/2" - 1/2"	4.60	4.90
HK 9D 02 45	HK 9V 02 45 02	8.40	10.80	15.10	22.50	210	260	50	3/4" - 1/2"	4.70	5.00
HK 9D 02 47	HK 9V 02 47 02	10.80	13.20	19.40	27.50	210	260	50	3/4" - 1/2"	4.80	5.10
HK 9D 02 49	HK 9V 02 49 02	14.40	16.80	25.90	35.00	210	260	50	3/4" - 1/2"	5.00	5.30

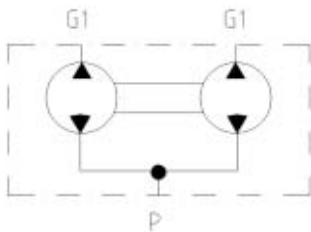


Fig. without valves

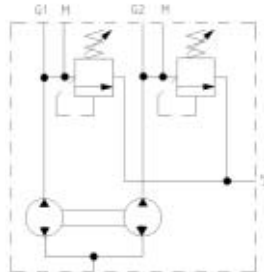


Fig. with valves

### Quadruple flow dividers with and without phase correction valves

Code without correction	Code with correction	cm <sup>3</sup> /rev per section	Flow rate per element l/min			Pressure bar			E/A thread	Weight kg without A	Weight kg with A
			At least	Recomm.	maximum	p1	p2	Δp			
HK 9D 04 41	HK 9V 04 41 02	4.20	4.80	7.60	10.00	210	260	50	3/4" - 1/2"	9.40	9.90
HK 9D 04 43	HK 9V 04 43 02	6.00	7.20	10.80	15.00	210	260	50	3/4" - 1/2"	9.50	10.00
HK 9D 04 45	HK 9V 04 45 02	8.40	10.80	15.10	22.50	210	260	50	3/4" - 1/2"	9.60	10.10
HK 9D 04 47	HK 9V 04 47 02	10.80	13.20	19.40	27.50	210	260	50	3/4" - 1/2"	9.70	10.20
HK 9D 04 49	HK 9V 04 49 02	14.40	16.80	25.90	35.00	210	260	50	3/4" - 1/2"	9.90	10.40

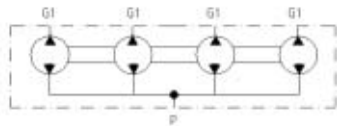


Fig. without valves

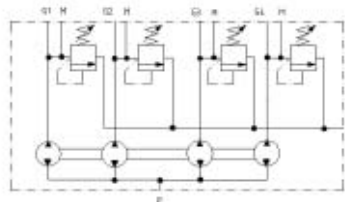


Fig. with valves

#### Applies to double flow dividers and quadruple flow dividers:

- Valves can be set from 70-210 bar, other setting ranges on request
- $p_1$  - max. operating pressure,  $p_2$  - max. peak pressure,  $\Delta p$  - max. pressure difference between the sections
- Speed rpm - min. 1200, max. 2500, recommended 1800-2000

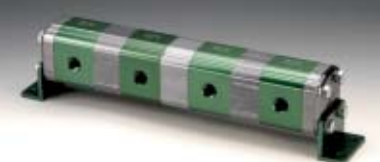
Other sizes and versions available on request



HK 9D 02 41



HK 9V 02 43 02



HK 9D 04 41



HK 9V 04 47 02